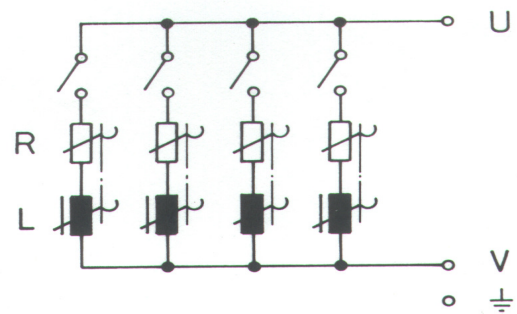




3600 SERIES

Standard Burden For Current and Voltage Transformers



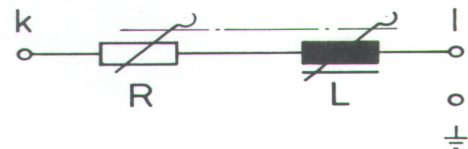
Voltage burden

BURDENS FOR MEASUREMENTS WITH AUTOMATIC TETTEX INSTRUMENT TRANSFORMER TEST SET, TYPE 2767

CURRENT BURDENS

According to VDE/PTB

Frequency: 50 Hz
 Limit of error: $\pm 3\%$ (R, L)
 For load: IN = 1 A: 5...200 % IN
 IN = 5 A: 5...200 % IN
 Limit of error: $\pm 3\%$ (R)
 $\pm 10\%$ (L) ** $\pm 3\%$ on request
 For load IN = 5 A: 1... < 5 % IN
 Calibrated leads: 0.03 Ω
 Power ranges: Power stage may be selected Individually



Current burden

| Type | Rated currents IN | cos β | Power ranges | Dim. w x h x d | Weight |
|------|-------------------|-------------|---|--|----------------------|
| 3631 | 1 A | 1 0.8 | 1.25 - 2.5 - 3.75 VA 5-7.5-10-11.25-15-20-22.5-30-45-60 VA | 19" Rack | = 21 kg |
| | 5 A | 1 0.8 | 1.5-2.5-3.75 VA 5-7.5-10-11.25-15-20-22.5-30-45-60 VA | 482 x 266 x 525mm (19x 10.5x 20.7 in) | (= 46 lb) |
| 3672 | 1-5 A | 0.8 | +60 VA = max. 120 VA | 19" Rack 482x 221 x 525mm (19 x 8.7 x 20.7 in) | = 18 kg (= 40 lb) |

a brand of

HAEFELY



Haefely is a subsidiary of Hubbell Incorporated.



CURRENT BURDENS

According to ANSI/IEEE C57.13-1978

Frequency: 60 Hz
 Limit of error: $\pm 3\%$ (R, L)
 For load: 5...200 % of rated current IN
 Calibrated leads: 0.03 Ω
 Power range: Power stages may be selected individually

SPECIAL CURRENT BURDENS, TYPE 3630

Current burden according to other standards or, for example, burdens according to ANSI for 50 Hz on request.

| Type | Rated current | cos β | Power ranges | Dim. w x h x d | Weight |
|------|---------------|-------------|---|--|----------------------|
| 3635 | 5 A | 0.9 0.5 | 2.5-5-12.5-22.5-45 VA = B 0.1 - B 0.2 - B 0.5 - B 0.9 - B 1.8 25-50-100-200 VA = B 1 - B 2 - B 4 - B 8 | 19" Rack 482 x 221 x 525 mm (19 x 8.7 x 20.7 in) | = 21 kg (= 46 lb) |

VOLTAGE BURDENS

According to VDE/PTB

Frequency: 50 Hz
 Limits of error: $\pm 3\%$ (R, L)
 For load: 5...190 % of rated voltage UN
 Power ranges: Fixed stages may be added up

* in stages of 1.25 VA each

Also available as combined versions:
 Types 3641 and 3682 as type 3641/82
 Types 3643 and 3684 as type 3643/84

| Type | Rated voltages | cos β | Power ranges | Dim. w x h x d | Weight |
|------|--|-------------|--------------------------|--------------------------------|-----------------|
| 3641 | 100-100 / $\sqrt{3}$ -200 / $\sqrt{3}$ V | 0.8 | 2.5... 206.25 VA* | | 35 kg / 77 (lb) |
| 3682 | 100-100 / $\sqrt{3}$ -200 / $\sqrt{3}$ V | 0.8 | +200 VA = max. 406.25 VA | 19" Rack 482 x 355 x 545 mm | 24 kg / (53 lb) |
| 3643 | 100-100 / $\sqrt{3}$ -110-110 / $\sqrt{3}$ V | 0.8 | 2.5 ... 206.25 VA * | (19 x 14 x 21.5 in) | 35 kg / (77 lb) |
| 3684 | 100-100 / $\sqrt{3}$ -110-110 / $\sqrt{3}$ V | 0.8 | +200 VA = max. 406.25 VA | | 24 kg / (53 lb) |

VOLTAGE BURDENS

According to ANSI/IEEE C 57.13-1978

Frequency: 60 Hz
 Limits of error: $\pm 3\%$ (R, L)
 For load: 50 ... 125 % of rated voltage UN
 Power range: Power stages may be selected individually

SPECIAL VOLTAGE BURDENS, TYPE 3640

Voltage burdens according to other standards or, for example, ANSI for 50 Hz or voltage 100-110-100 / $\sqrt{3}$ - 110 $\sqrt{3}$ V on request.

Types 3645 and 3686 combined, available as type 3645/86.

| Type | Rated voltages | Power ranges | Dim. w x h x d | Weight |
|------|-------------------------|---|--------------------------------|---------|
| 3645 | 120 - 120/ $\sqrt{3}$ | 25-35-75-200 VA = X-M-Y-Z (0.7-0.2-0.85-0.85 = cos β) | 19" Rack 482 x 266 x 445 mm | 25 kg |
| 3686 | 120 - 120/ $\sqrt{3}$ V | +200 VA = 400 VA = ZZ (0.85 = cos β) | (19 x 10.5 x 17.5 in) | (55 lb) |

European Contact

Haefely Test AG
 Lehenmattstrasse 353
 4052 Basel
 Switzerland
 ☎ + 41 61 373 4111
 ☎ + 41 61 373 4912
 ✉ sales@haefely.com

Locate your local sales representative at

www.haefely.com

USA Contact

Hipotronics Inc.
 1650 Route 22
 PO Box 414
 Brewster, NY 10509 USA
 ☎ + 1 845 279 8091
 ☎ + 1 845 279 2467
 ✉ sales@hipotronics.com

a brand of

HAEFELY



Haefely is a subsidiary
 of Hubbell Incorporated.

